

## LORENTZ Global

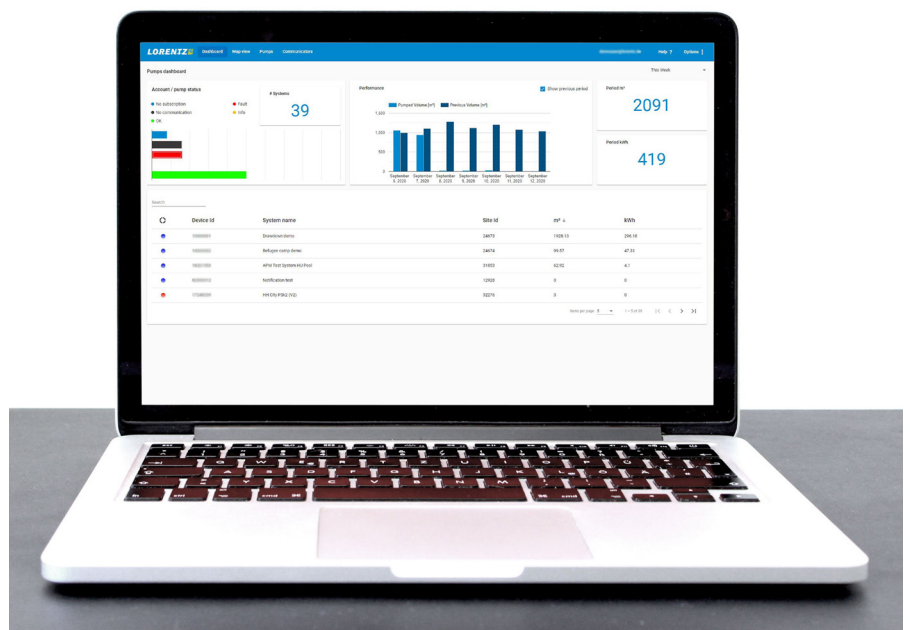
### Cloud based remote monitoring and management

**A simple and cost effective solution to manage and monitor your LORENTZ systems from anywhere in the world!**

LORENTZ Global allows you to monitor and manage LORENTZ devices anywhere in the world. The platform is designed to serve a wide range of customers and applications from one pump for a farmer to thousands of pumps for utilities, corporations or governments.

This is an easy to use, cloud based, pay monthly service that takes away the complexity of remote monitoring and management. Access to real-time data and configuration settings allows you to get the most out of any application while at the same time reducing maintenance trips and improving customer service.

All you need is any internet connected computer, tablet or smartphone to start experiencing the benefits right away!





# Know what your system is doing

With LORENTZ Global, you are the first to know what is happening on remote sites from one simple to use management screen. This technology allows you to plan ahead, reduces project risk and losses, and saves you time and money by minimizing maintenance visits.

## Real-time monitoring of the system and performance

LORENTZ Global includes clear pump and water source performance information for monitoring and future planning.

## Full control by modifying your system online

Your system can be modified online including the option to switch on, switch off, monitor external sensors and control.

## Reduce risk and losses

Proactive alerts are sent if there are unexpected events or problems. This allows you to achieve the fastest resolution with minimal impact on your application.

## Getting started

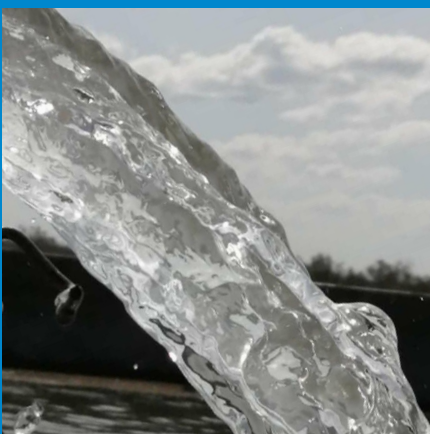
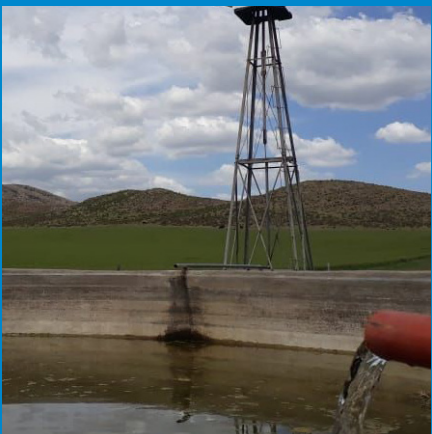
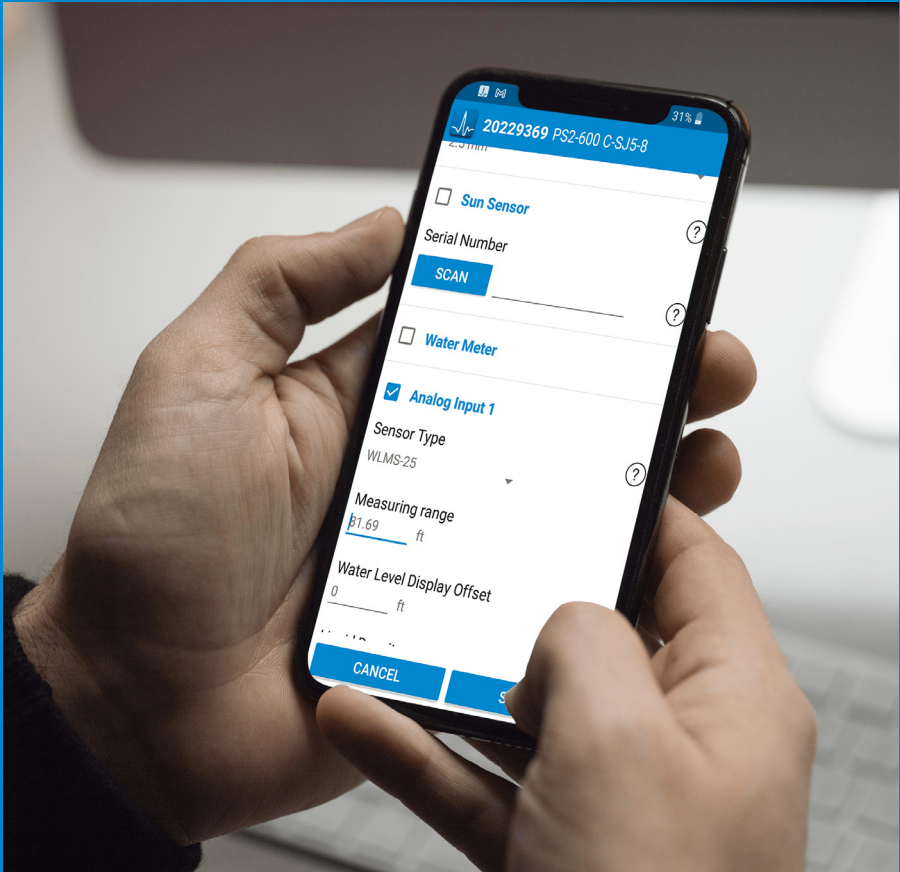
LORENTZ Global provides high value to drinking water, livestock, irrigation and energy applications with an inclusive monthly fee for cellular data access, application updates and web service. With one low fee you can see exactly what the system is doing, make changes to settings and receive alerts irrespective of location.

## Licensing and security

In LORENTZ Global you do not need to pay for user licenses, so each customer can set up multiple accounts and these are managed with different access permissions. All system data and files are securely stored in the cloud-based management system.

## Service costs

Service costs are based on the number of devices that are sending data to LORENTZ Global. Services are charged per device, per month.





## Experience the benefits

**World class remote connectivity, simply and flexibly delivered**

### Simple to configure and use

LORENTZ Global entails a modern interface, configurable alert system, multilingual options and settings change history.

### Time and cost savings

Knowing what your system is doing and configuring your system remotely greatly reduces time and money spent on maintenance trips. It also improves customer service and the productive time of the system.

### No need for IT skills

The solution is mostly self-configuring, requires no additional equipment from 3rd parties and can scale from 1 to thousands of units.

### Future resilient

LORENTZ Global is built on the latest database, web technologies and infrastructure. This service is hosted on Amazon Web Services providing massive scalability and high security.

## CONNECTED for local and remote communication

All LORENTZ solar water pumping systems are **CONNECTED**. This means they are easy to configure, provide rich information to technicians and customers plus they can be managed remotely.

LORENTZ CONNECTED features make configuration simple, reduce site visit costs and ensure you are informed of exactly what your life critical solar water pumping system is doing.



### PumpScanner & Assistant

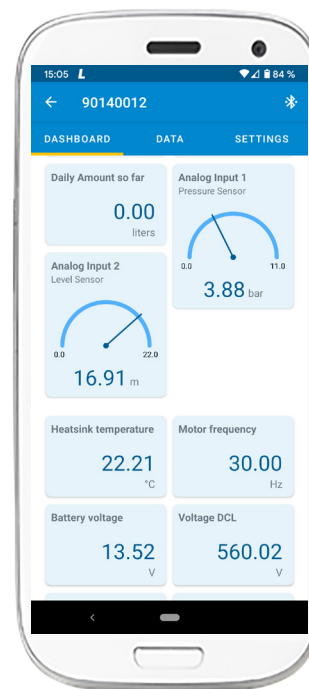
- The LORENTZ CONNECTED apps, PumpScanner and Assistant provide local access to LORENTZ products for configuration, real time data and stored data
- LORENTZ Assistant can send data stored in LORENTZ systems to LORENTZ Global

### PS Commander

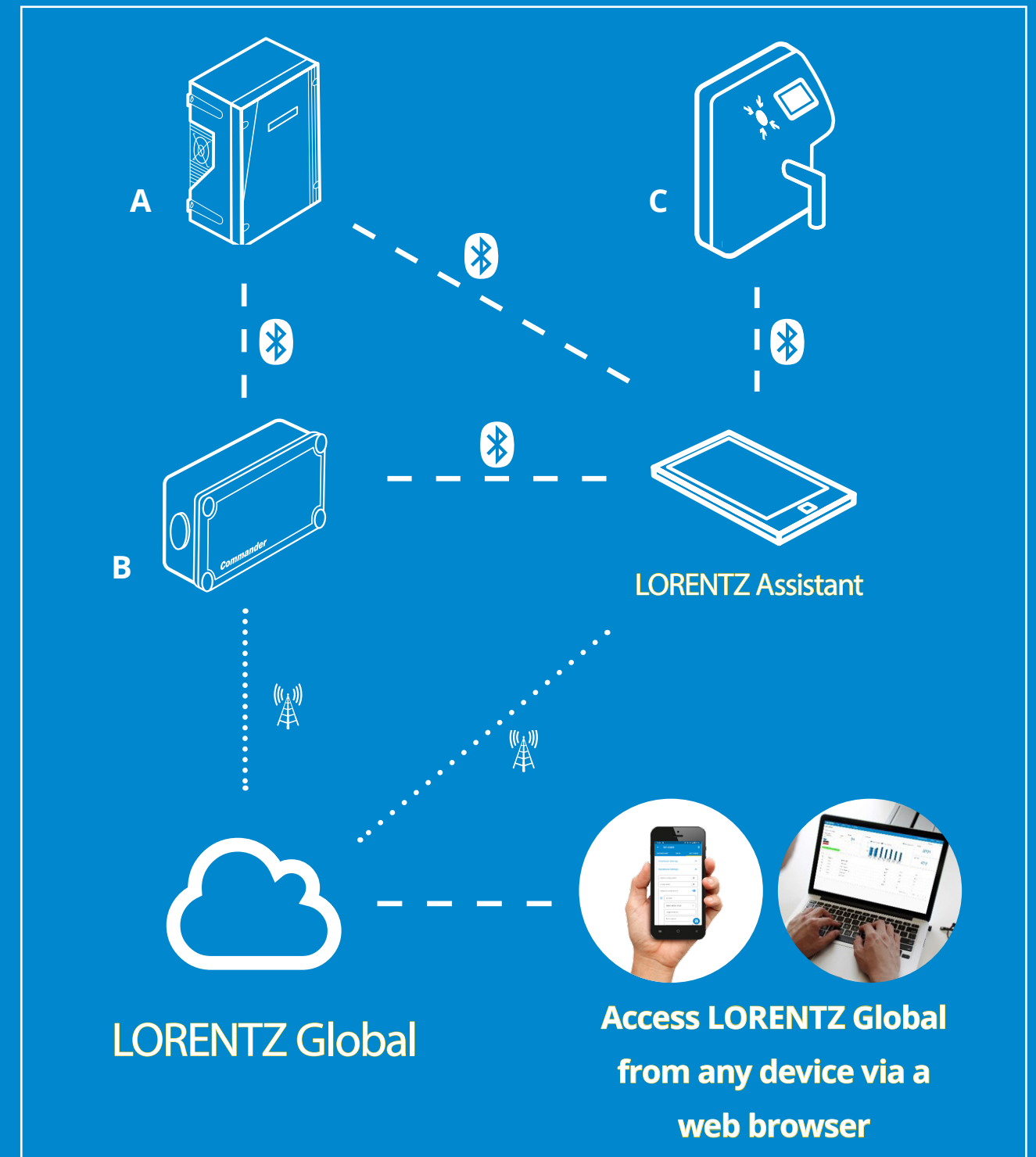
- The PS Commander is solar powered cellular gateway that connects the pump controller to the LORENTZ Global application in the cloud
- PS Commander provides 2 way connection from the pump system to LORENTZ Global

### How to access LORENTZ Global

- Access to LORENTZ Global is possible using any device with a web browser



## Easily collect data and send it to LORENTZ Global



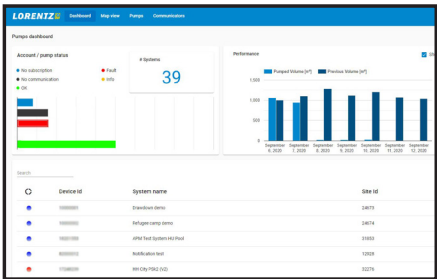
A: LORENTZ Controller  
B: PS Commander  
C: LORENTZ smartTAP Water Dispenser

# Designed with YOU in mind

Clear and precise screens provide you with a full overview of operation, performance and trends for your systems

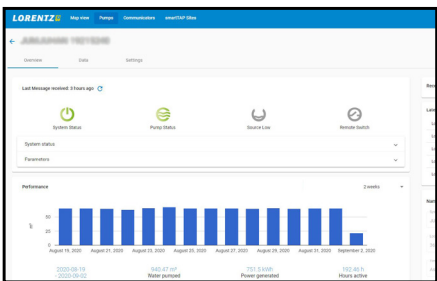
Use the dashboard view to monitor your systems in real time

- Access all of your systems, pump status and performance conveniently on one dashboard to plan for the future starting today!



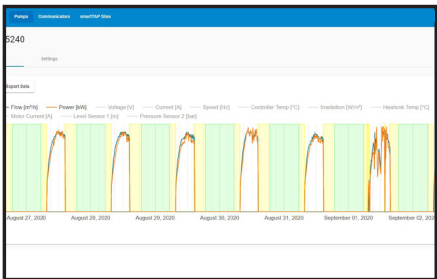
Data at your fingertips to monitor system performance

- Access system information including live pump status, water pumped, power generated, hours active and much more. All status events are tracked and it is easy to compare data across time periods.



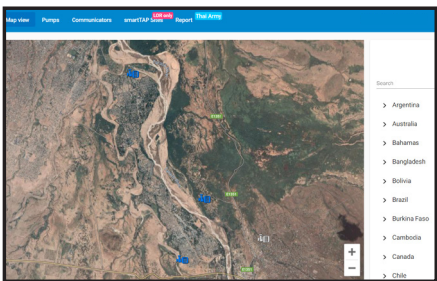
Get into the details when you need to

- You can see values and trends for system voltages, current, power, temperature, irradiation and levels from pressure and level sensors.
- Full system configuration is available remotely including tracking of changes by user.



Pro-active alerts and a map overview

- LORENTZ Global will send fully configurable pro-active alerts to you via email
- The map view complements this by providing a visual overview of system status



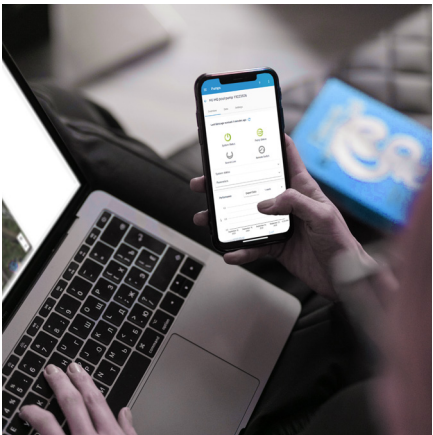
Check out our free demo to see what LORENTZ Global could do for you

Go to <https://global.lorentz.de>

Click on try our demo

DEMO

See what information is available to LORENTZ Global users and how this could make your business better



## About LORENTZ

LORENTZ is the global market leader in solar powered water pumping solutions. Founded in Germany during 1993 LORENTZ has pioneered, innovated and excelled in the engineering and manufacturing of solar powered water pumping. Today LORENTZ is active in over 130 countries through a dedicated network of professional partners. LORENTZ technology uses the power of the sun to pump water, sustaining and enhancing the life of millions of people, their livestock and crops.

Simply – **Sun. Water. Life.**



LORENTZ Germany  
Siebenstücken 24  
24558 Henstedt-Ulzburg  
Germany

☎ +49 (4193) 8806 700

LORENTZ China  
No 34 Jiuan Road  
Doudian Town  
Fangshan District  
102433 Beijing  
China

☎ + 86 (10) 6345 5327

LORENTZ US Corp  
710 S HWY 84  
Slaton, TX 79364  
USA

☎ +1 (844) LORENTZ

LORENTZ India Pvt. Ltd.  
Netaji Subhash Place  
Pitampura 110034  
New Delhi  
India

☎ + 91 (11) 4707 1009