

LORENTZ CONNECTED apps

Android™ apps for system configuration and data analysis

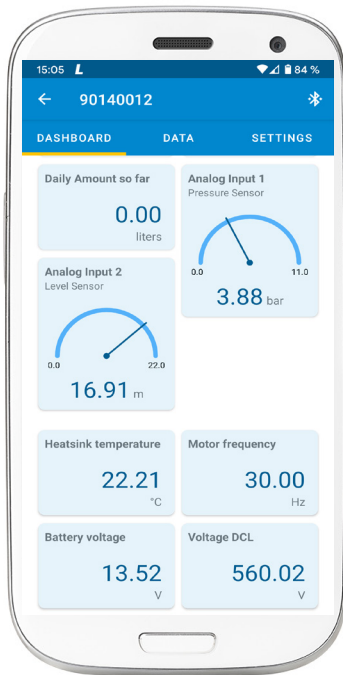


LORENTZ CONNECTED apps include PumpScanner and LORENTZ Assistant. These two apps are designed for Android™ devices (smartphone or tablet) which allow installers, customers and technicians to easily configure, monitor and control LORENTZ pump systems.

All LORENTZ pump systems* have built-in data logging. At each installation site, the pump controller records the performance and technical data from the system and stores it for analysis.

The controller uses Bluetooth™ to communicate with the LORENTZ CONNECTED apps allowing secure real-time data to be viewed and historic data to be collected without physical connections.

PumpScanner and LORENTZ Assistant are free to use and available on the Google Play store.



Benefits

- Provides access to market leading features that LORENTZ pumps offer such as timers, speed control, hybrid configuration, power, time of day, constant pressure, pressure switching, constant flow, daily flow and more!
- Provides clear pump and water source performance information for monitoring and future planning
- Access and configuration of systems using the apps is intuitive and simple
- Very professional diagnostic and information tools available on low cost Android™ smartphones
- Reduces fault finding time and cost
- Identifies any pro-active service work that needs to be carried out
- No need for cellular connectivity as all functions are available offline via a Bluetooth™ connection
- System registration including bar code scanning makes creating installation records quick and accurate

Features

- Simple setup and system configuration
- Access to advanced functions and applications from a simple touch interface
- Provides real-time and stored data for
 - voltages
 - currents
 - input and output power
 - flow rates
 - operating time
 - head
 - pump speed
 - cable losses
 - analogue sensor inputs
 - irradiation values
 - temperature, and more
- Bluetooth™ connectivity for secure contactless data transfer
- Stores up to 10 years of data (at 10 minute frequencies)
- Two-way communication to control and program pump speeds and operating times
- Allows upload of data from the pump controller to LORENTZ Global for consolidation of data (using LORENTZ Assistant)



for Android™

Android is a trademark of Google Inc. The Android robot is reproduced or modified from work created and shared by Google and used according to terms described in the Creative Commons 3.0 Attribution License.

* - PumpScanner is compatible with all current PS2 and PSk2 systems. LORENTZ Assistant is compatible with the PSk3, smartTAP and PS Commander. PS systems (pre-2012) may not be compatible.



LORENTZ PumpScanner and LORENTZ Assistant are part of the LORENTZ CONNECTED range of products for monitoring and control of solar water pumping systems.

To find out more visit www.lorentz.de

BERNT LORENTZ GmbH

Siebenstuecken 24, 24558 Henstedt-Ulzburg, Germany, Tel. +49 (0) 4193 8806 – 700

All specifications and information are given with good intent, errors are possible and products may be subject to change without notice. Pictures may differ from actual products depending on local market requirements and regulations. A pump system consists of a controller, motor and pump end. Multiple pumps/pump ends are shown to represent the wide range of pumps (over 130) that LORENTZ has.

Sun. Water. Life.