

S1 - Remote Tank Switch

Accessory to control the levels of a remote tank

Description

The **Remote Tank Switch (RTS)** accessory provides an effective way to switch off the S1-200 pump when the remote tank is full.

The **RTS** is installed on the discharge pipe (or hose) close to the pump controller. A float valve (not included) is installed in the tank situated at the end of the discharge line. The **RTS** monitors water flow in the hose (or pipeline) and based on this, signals to the pump controller to run the pump or not. The pump controller performs periodic startups every 15 minutes to monitor water flow.



Features

- Simple plug-in installation
- Automatic water flow sensor using a magnetic flow device
- Electronic components are sealed and not in contact with water
- Integrated non-return valve
- Adapters included for flexible installation
- Simple activation through the S-Connect App

Technical Data

Sensor type	Flow Switch
Installation	Hose or pipe
Connector type	Thread female
Pipe / hose size required	G 1" male / 25 mm [1 in]
Min. flow detection required	1.5 L/min [0.39 gal/min]
Operating temperature range	-10 °C to 70 °C [14 °F to 158 °F]
Enclosure class	IP 54
Non-return valve opening pressure	0.03 bar [0.5 psi]
Body material	Brass
Length of cable	3 m [10 ft]
Cable size	2 x 1 mm ² [AWG 18]
Plug type	M16 Female
Plug enclosure class	IP 67
Standards requirements	CE

Find more about the Remote Tank Switch here



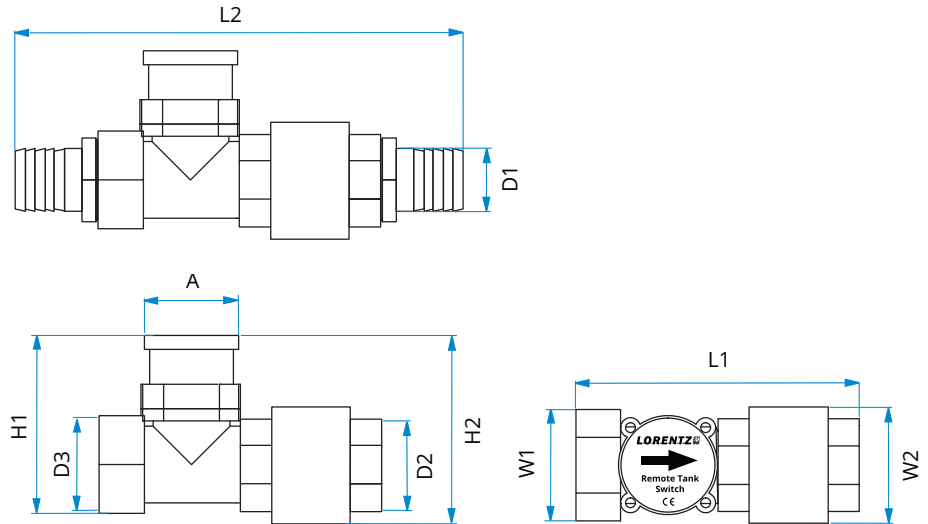
Additional component required (not included, aquired locally)

The **Remote tank switch** accessory must operate in conjunction with a "**Float valve / ballcock**" or similar located at the end of the discharge hose (or pipe). The valve should close the pipe when the tank is full. (Refer to the manual of the **Remote tank switch** for more information).

S1 - Remote Tank Switch

Dimensions and weights

A	37 mm [1.5 in]
D1	25 mm [1.0 in]
D2	G 1"
D3	G 1"
H1	72 mm [2.8 in]
H2	80 mm [3.2 in]
W1	40 mm [1.6 in]
W2	48 mm [1.9 in]
L1	114 mm [4.5 in]
L2	187 mm [7.3 in]
Net weight	0.7 kg [1.5 lb]

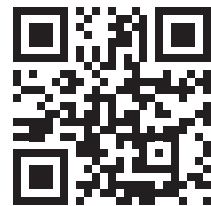
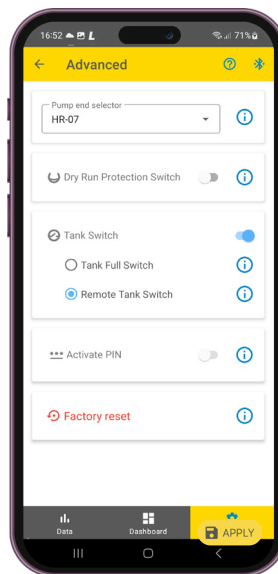


Activation

- Open the S-Connect app and select your pumping system
- In the **"Settings"** tab, activate **"Tank Switch"** and select **"Remote tank switch"**.
- Apply changes

Important:

Select the correct **"Pump end"**. For more information visit the help site: www.lorenz.de/s/help



Order and Packaging information

Item number	19-001530
Product name	S1-200 remote tank switch with 3m / 10ft cable
Box content	1 x Remote tank switch with 3 m [10 ft] cable 1 x Non-return valve 2 x Hose adaptors 2 x Hose clamps 1 x Manual
Packed gross weight	0.8 kg [1.8 lb]
Packaging dimensions [LxWxH]	210 x 180 x 65 mm [8.3 x 7.1 x 2.6 in]
Packed volume	0.002 m ³ [0.071 ft ³]

